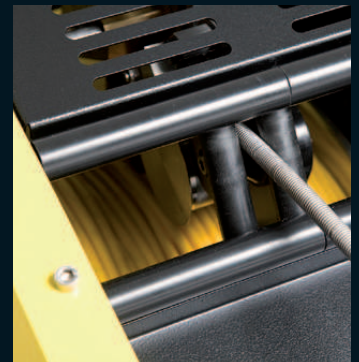
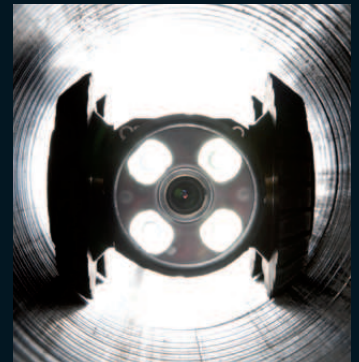


P350 flexitrax™ system



Flexibility and reliability
in a truly **portable** system.

P350 flexitrac™ system

Flexibility and performance at your service.

**The most advanced and complete portable crawler system
for the pipeline inspection professional.**

RELIABILITY WHERE YOU NEED IT

Weatherproof construction
that's designed to withstand
the toughest conditions.



OUTSTANDING PICTURE QUALITY

Ultra-bright LEDs and
high-resolution cameras
built on a powerful digital
video platform.



DIGITAL VIDEO

Small and light control unit
with advanced video
functions and integrated
report writer.

Most motorized inspection systems are complex and bulky. Many are difficult to transport and install, prone to weather damage and are complicated to operate.

The P350 flexitrac™ offers inspection professionals the ultimate portable crawler system. This advanced and affordable system features the simplicity and transportability of a pushrod system whilst delivering the functionality and performance associated with complex and expensive crawler systems.

The P350 is a modular system, designed to meet the tough requirements of any inspection environment.

Outstanding picture quality

The P350 flexitrac features ultra-bright LEDs and high-resolution cameras built on a powerful digital video platform. The P350 flexitrac system supports three interchangeable, high-resolution cameras. Each camera features the latest generation, ultra-bright white LEDs that ensure a clear picture and a long, maintenance-free life. The digital video is displayed on the command module's ultra-bright, 8" industrial grade TFT screen.

The P350 flexitrac command module allows you to zoom and rotate photos and live or recorded digital video in real-time. The command module also provides Mimic™ display, an intuitive way of controlling pan and tilt.

Combined, these features provide outstanding video picture quality and make it easier and quicker to correctly identify problems even in the toughest conditions.

Reliability where you need it

The P350 flexitrac is engineered to operate in almost any environment. The command module and drum have a weatherproof rating of IP53. The tough, yet light-weight controller provides a durable buffer between the elements and your survey data.

The command module stores survey data direct to solid-state Compact Flash cards. Solid-state non-volatile memory means there's no moving parts so your files are secure and less vulnerable to shock damage and power outages.

The system is operable in the most demanding conditions. The crawlers can



operate fully submersed and are water resistant to depths of up to 100m. They are constructed from brass and stainless steel and are built with powerful 50 or 100W motors that can move through almost any pipeline system. The integrated sensitive inclinometer and the multi-frequency sonde allow you to map pipeline topography easily and efficiently.

The ruggedly constructed cameras are designed to transfer any front impact to the crawler body, protecting the cameras from shock damage.

Flexible digital data transfer

The advanced digital platform of the P350 flexitrax means you can transfer survey data from your Compact Flash card to your PC or laptop via fast USB 2.0. Use the included FlexiSight™ Windows-based software to edit video and convert reports to Microsoft® Word format.

With *Bluetooth*® wireless technology you can send your inspection photos from the command module to a compatible cell phone and forward them instantly to your client.

Versatility

The P350 flexitrax is small enough to fit in the trunk of your car. The system can be van or truck mounted and wheeled on site using the ergonomic barrow design, allowing you to reach conduits beyond the range of your vehicle. Once on site, the system is quick and easy to set-up and deploy.

Build the system to meet your inspection requirements. Choose between a practical and inexpensive manual drum system or an advanced, compact, self-contained powered drum with up to 250m of cable. Choose from three interchangeable cameras and

two powerful, yet compact crawlers that are designed to withstand the most challenging sub-surface conditions.

The command module is also fully compatible with the P330+ flexiprobe™, giving you access to its comprehensive range of pushrod reels, cameras and accessories. Switch from crawler to pushrod inspection without carrying a second system.

The system is easy to use, thanks to its intuitive user interface and simple, one-touch control over video and photo capturing. The tough and durable keypad gives you direct access to advanced digital features and lets you drive any drum, crawler and camera combination.

The command module and the drum also feature RCA video outputs, meaning you can record your video to an external device or display video on an external monitor.

Each crawler ships with one set of small wheels. The small wheel set is the optimal choice for deployment in 100mm (4") pipes for the P354 crawler and in 150mm (6") pipes for the P356 crawler. For bigger pipes there is an option of different wheel configurations and elevators.

Serviceability

The P350 flexitrax system is designed and built for continuous operation and easy maintenance. Each crawler is designed for quick repair. The powered drum features a removable drum and cable cassette that's fast and easy to replace in the workshop or even in the field. The optional re-termination kit makes it easy and affordable to replace and repair damaged cables.

The P350 flexitrax system is the obvious choice when you need cost-effective and flexible solutions.

FLEXIBLE DIGITAL DATA TRANSFER

Access your survey data with Compact Flash cards, USB 2.0 or *Bluetooth*® wireless technology.



RUGGED AND WEATHERPROOF

Surface equipment is IP53 rated whilst crawler and cameras are rated IP68.



VERSATILITY

Build the ultimate, compact system to suit your inspection needs.



SERVICEABILITY

Designed for continuous operation and easy maintenance on and off site.

Digital control

- Compact and tough controller can be left on the drum or fitted where convenient
- Ultra-bright 8" industrial grade TFT screen with anti-reflective protection offers the best picture in any light condition
- Tough and durable keypad to control all the system functions and movements
- Splashproof keyboard for text entry and report writing
- Digital zoom and picture navigation functions to explore, in real-time, the live video picture
- Record full SVGA video and snapshots onto solid-state Compact Flash (CF) card
- *Bluetooth*® wireless technology to send photos world-wide instantly (using a compatible cell phone and service provider)
- USB 2.0 port to transfer all the files quickly to a PC or laptop
- Compatible with P330+ flexiprobe pushrod system

Rugged and flexible

- IP53 and IP68 rated system
- Self-contained power drum allows for van fit or portable use
- Cable lengths from 100m to 250m with a cable-end protection system
- Automatic or manual retrieval mode
- Manual drum available
- Crawlers rated IP68 to 100m, with inbuilt inclinometers and multi-frequency sondes

Power and agility

- Non-steerable 100mm (4") crawler allows access in a typical 300mm manhole and pipe surveys from 4" to 12" (100 to 300mm)
- Steerable 150mm (6") crawler for pipes from 150mm (6") to 600mm (24")
- 50W (4") and dual 50W (6") crawler motors
- Quick release wheels and choice of hard or soft tires for all pipe conditions



Light and vision

- Latest generation, ultra-bright LEDs for a long, maintenance-free life and exceptional light performance
- Choice of three high-definition cameras: forward view, pan & tilt or pan & tilt with 10x optical zoom
- P350-CMOD Mimic display control and auto survey mode for easy pan & tilt operation



Flexibility

The P350 flexitrac system is a modular system and all its main components are fully interchangeable.

Tailor the system to suit your business needs:

- Choose between the manual or self-contained powered drum systems,
- Determine the cable length and crawler size to meet your typical pipe requirements,
- Choose any high-resolution (Fixed, Pan & Tilt or Pan & Tilt with 10x Optical Zoom) camera; each with the latest generation ultra bright, white LED technology,
- Choose from a wide range and size of wheels, tires and accessories to suit any inspection environment,
- Use the P350 controller with the comprehensive P330+ flexiprobe range.

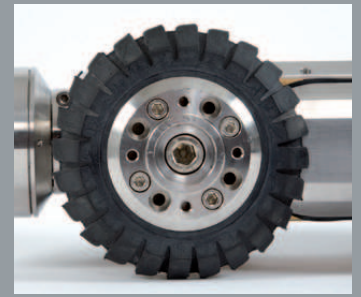
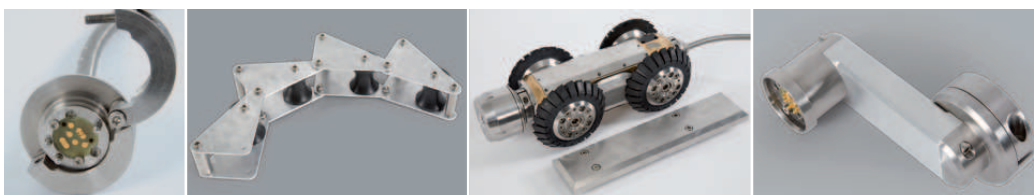
P350 flexitrac system options

CONTROLLER	Command Module		
DRUM	Manual Drum + Portable PSU		Power Drum with Integral PSU
CRAWLERS	100mm (4") Crawler		150mm (6") Crawler
CAMERAS	Forward View	Pan & Tilt	Pan & Tilt with Zoom
CABLE LENGTH	100m/150m/250m	100m/150m/250m	100/150m/250m
TIRES	Small (hard and soft)	Medium (hard and soft)	Large (Not suitable for 4" Crawler)



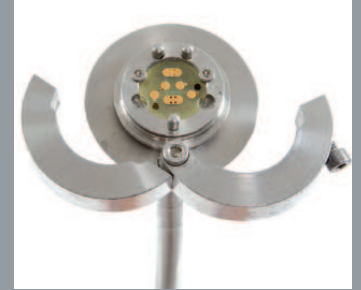
Accessories

WALL-MOUNT	To mount the controller on an adjustable arm to the side of your van
CRAWLER WEIGHT	2kg weight plate to boost the 4" crawler traction performance
ELEVATOR	Fixed length or adjustable elevator to center the camera position in the pipe
CRAWLER GRAB	Choice of two crawler grab tools 100mm (4") and 150mm (6") to ensure a safe and quick crawler deployment or retrieval
LIGHT-HEAD	8W light head for extra light
VAN/TRUCK MOUNTING KIT	To mount the system to your van or truck



CHOICE OF TIRES

Hard or soft, the flexitrac tires ensure traction in the most demanding pipes.



EASY TERMINATION

Terminating the drum cable is quick and easy with the re-termination kit.



GRAB TOOL

The crawler grab tool ensures the safest and quickest crawler deployment or retrieval.

FlexiSight™ SOFTWARE

Edit your full SVGA videos on a PC or laptop. Convert the reports into Microsoft® Word™ format.

Specifications

P350 flexitrac system specification

- **Environmental** IP53 (Surface Equipment); IP68 to 100m (Crawlers and Cameras)
- **Temperature (Storage)** -20 to 80°C (-4 to 176°F)
- **Temperature (Working)** -10 to 50°C (14 to 122°F)

COMMAND MODULE	P350-CMOD
Screen	8" (200mm) Industrial TFT, SVGA
Storage	High Speed Compact Flash
Recording Time (hrs)*	1:45 (HQ) - 3:45 (MQ) - 9:00 (LQ)
Connectivity	USB 2.0, Video In/Out, Bluetooth®
Dimensions	300 x 360 x 200mm / 14" x 14" x 8"
Weight	5.5 Kg /12lbs

*Based on a 2GB Compact Flash card



DRUMS	P350-DRUM-M	P350-DRUM-P
Dimensions (L x W x H) Drum	445 x 270 X 570mm 17.5" x 10.6"x 22.4"	633 x 412 x 740mm 24.9" x 16.2" x 29.1"
Dimensions manual power pack	418 x 195 x 420mm 16.5" x 7.7" x 16.5"	Integral
Weight	18kg – 29kg (39.7lbs – 64lbs) depending on cable length	59kg – 70kg (130lbs – 154lbs) depending on cable length
Construction	Powder-coated tubular steel frame with steel and aluminum power pack enclosure. Stainless steel and alloy manual cable management mechanism	Powder-coated steel chassis with steel and aluminum enclosure. Interchangeable alloy cable drum. Stainless steel and alloy automatic cable management mechanism
Power	110-240V 50-60Hz or 1.2kW rated generator	110-240V 50-60Hz or 1.2kW rated generator

CRAWLERS	P354	P356
Pipe diameter	100mm (4") to 300mm (12")	150mm (6") to 600mm (24")
Dimensions (L x W x H)	250mm (9.8") x 82mm (3.2") x 69mm (2.7")	345mm (13.6") x 128 (5") x 84 (3.3")
Weight	5.4kg (12lbs)	14kg (31lbs) approx.
Motors	1 x 50W	2 x 50W
Construction	Brass and Stainless Steel	Brass and Stainless Steel
Sonde frequency	512/640/8192/32768 Hz	512/640/8192/32768 Hz
Inclinometer accuracy	+/- 0.2°	+/- 0.2°

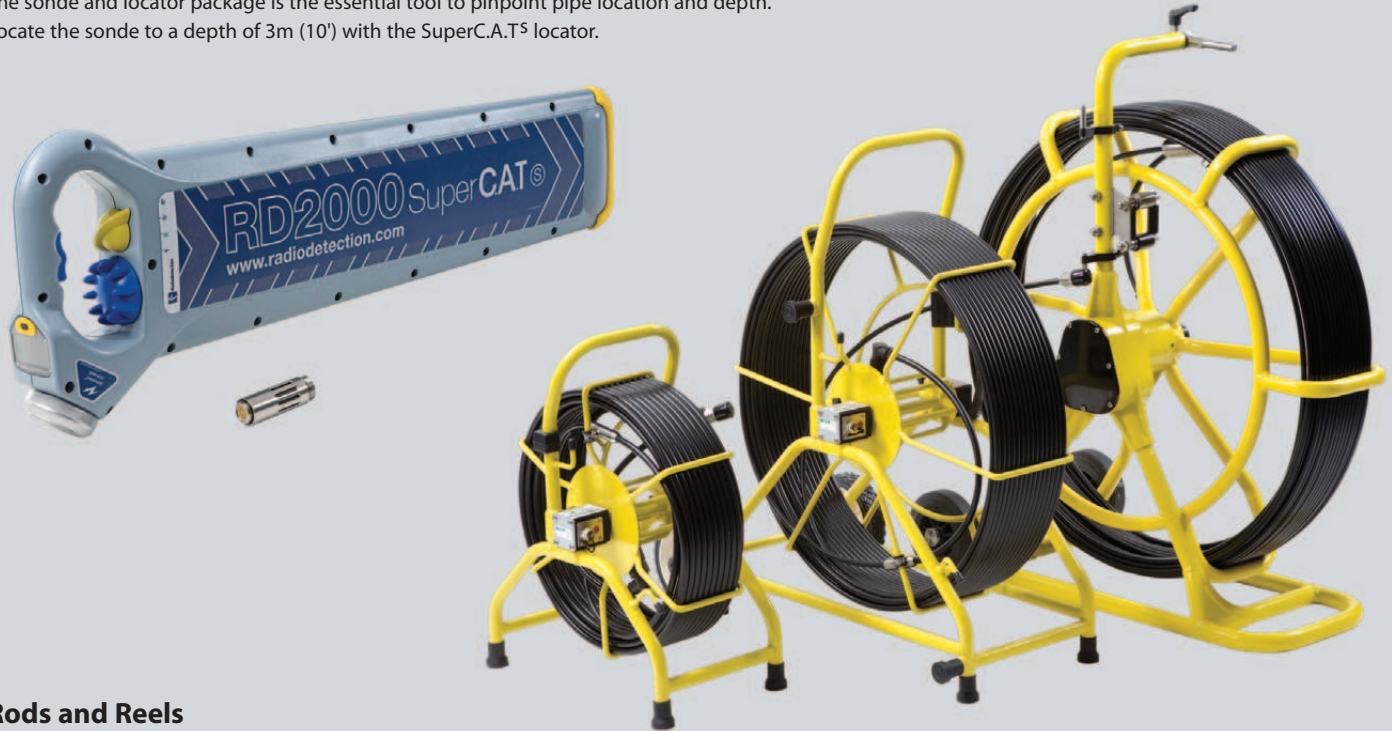
CAMERAS	P350-CAM-FW	P350-CAM-PT	P350-CAM-PTZ
Dimensions (L x Diameter)	62mm (2.4") x 68mm (2.7")	Approx. 128mm (5") x 70mm (2.8")	TBA
Weight	600g /1.3 lbs	1.5kg / 3.3lbs (approx.)	TBA
Construction	Stainless Steel	Stainless Steel	Stainless Steel
Focal Length	5mm to ∞	5mm to ∞	2mm (WIDE) to 42mm (TELE)
Horizontal Resolution	≥460TVL	≥460TVL	≥460 TVL

- **Approvals** CE (LVD 2006/95/EC, MD 98/37/EC, EMC 2004/108/EC) / FCC 47 CFR part 15.
RoHS Compliant. EN61010-1:2001, IEC61010-1:2001, UL61010-1, EN61000-6-2:2005, EN61000-6-4:2001.

The flexiprobe™ range

Sonde and Locator package

The sonde and locator package is the essential tool to pinpoint pipe location and depth. Locate the sonde to a depth of 3m (10') with the SuperC.A.T^S locator.



Rods and Reels

	MINI REEL	STANDARD REEL	SPECIALIST REEL
Dimensions	570 x 440 x 256mm 22.4" x 17.3" x 10.1"	850 x 750 x 420mm 33.5" x 29.5" x 16.5"	813 x 1168 x 475mm 32.0" x 46.0" x 18.7"
Weight	11kg/24lbs	18.2Kg/40lbs 24.9Kg/55lbs	37Kg/74.2lbs
Construction	Welded steel powder coated		
Rod	35m (115')	60m (200') 120m (400')	150m (500')

Cameras

	25mm (1") CAMERA	50mm (2") CAMERA
Dimensions	24 x 39mm 0.94" x 1.54"	48 x 80mm 1.89" x 3.15"
Weight	0.06Kg/0.13lbs	0.38Kg/0.84lbs
Construction	303 stainless steel	303 stainless steel
Power	0.75W	1.90W (max)
Operating Temperature	-10°C to +50°C	-10°C to +50°C
Focal length	20mm to ∞	170mm
Focus	Adjustable	Fixed
Lighting	Maintenance-free LEDs	Maintenance-free LEDs
Image Resolution	628 x 582 PAL 510 x 492 NTSC	752 x 582 PAL 500 x 582 NTSC
S/N ratio	>46dB	>45dB

